



# SHERWOOD

MACHINERY PTY. LTD. A.B.N. 14 003 931 557

FERNDAL RD., (P.O. BOX 6)

BUNDANOON N.S.W. 2578

## SS 64 FITTING INSTRUCTIONS

THIS ROLL-OVER TRACTOR SAFETY FRAME HAS BEEN DESIGNED AND TESTED TO AS 1636-1984 AND IS TO BE USED ONLY AS A ROLL-OVER PROTECTIVE STRUCTURE AND NOT FOR ANY OTHER PURPOSE. IT SHALL NOT BE ALTERED OR MODIFIED IN ANY WAY AS THESE MODIFICATIONS, ALTERATIONS OR DAMAGE MAY ADVERSELY AFFECT ITS PERFORMANCE.

### SS 64 BOLT KIT FOR INTERNATIONAL TRACTORS

QUANTITY	DIMENSION	LENGTH ETC.
2 X	5/8" X	9" UNC GRADE 8 BOLTS
2 X	5/8" X	2 1/2" UNC GRADE 8 BOLTS
4 X	3/4" X	3" UNC GRADE 8 BOLTS
NOTE: NON-LINKAGE TRACTORS USE 3/4" X 2" BOLTS INSTEAD OF 3" ↑		
2 X	3/4" X	2" UNC GRADE 8 BOLTS
2 X	3/4" X	UNC GRADE 8 NUTS
8 X	3/8" X	2" UNC BOLTS
8 X	3/8" X	NYLOC NUTS
6 X	3/4" X	SPRING WASHERS
2 X	5/8" X	UNC GRADE 8 NUTS
4 X	5/8" X	SPRING WASHERS
4 X	5/8" X	FLAT WASHERS
8 X	SHORT	PIPE SPACERS (FOR MUDGUARDS)
2 X	2-HOLED	3 PT LINK SUPPORT PLATES
NOTE: ABOVE PLATES AND RELATED BOLTS ARE NOT REQUIRED IF THE TRACTOR DOES NOT HAVE 3 PT LINKAGE FITTED.		

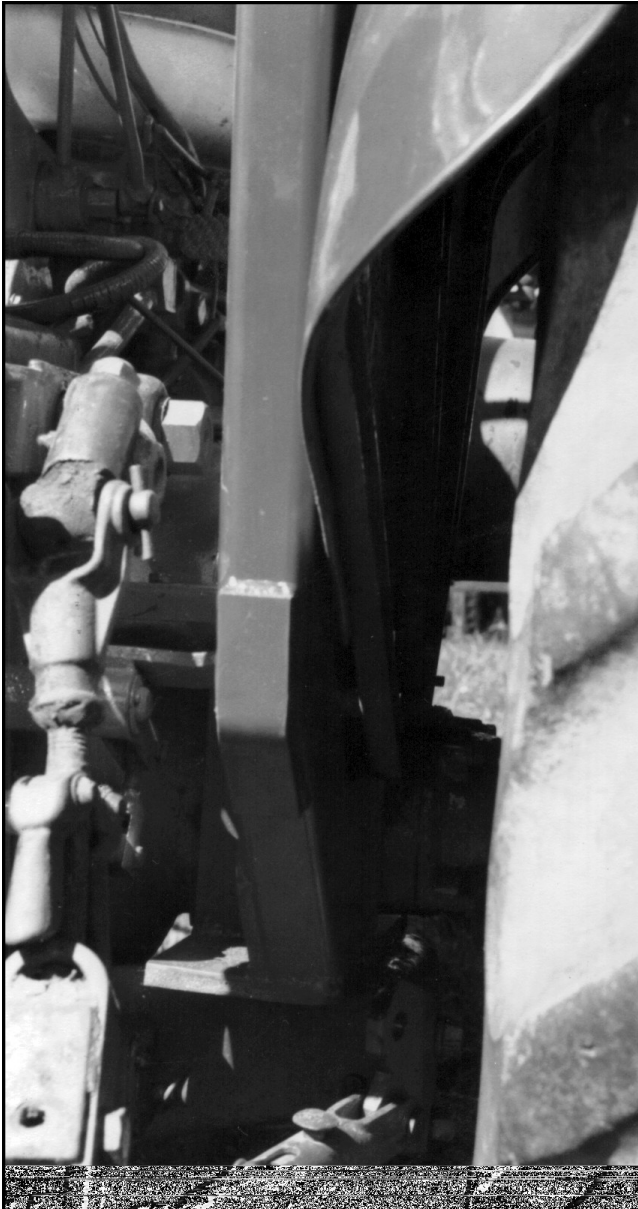






**SHERWOOD**  
MACHINERY PTY. LTD. A.B.N. 14 003 931 557  
FERNDAL RD., (P.O. BOX 6)  
BUNDANOON N.S.W. 2578

**SS 64 PAGE 2**  
**FITTING INSTRUCTIONS**



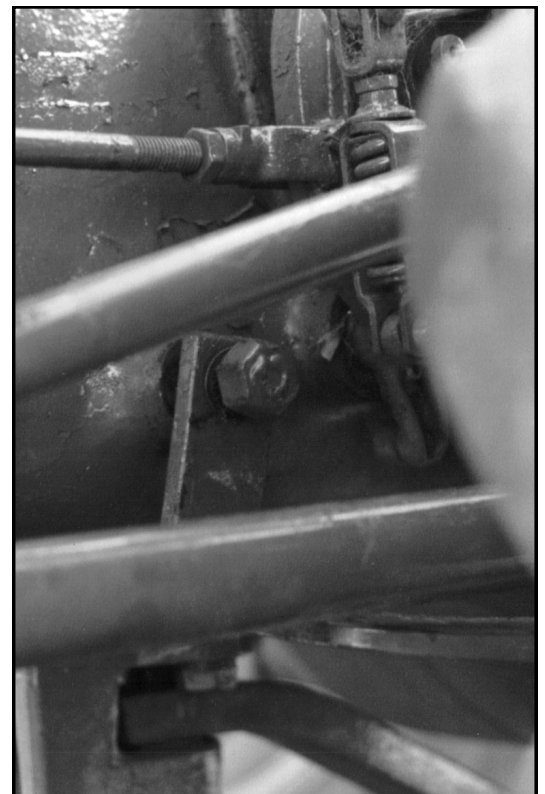
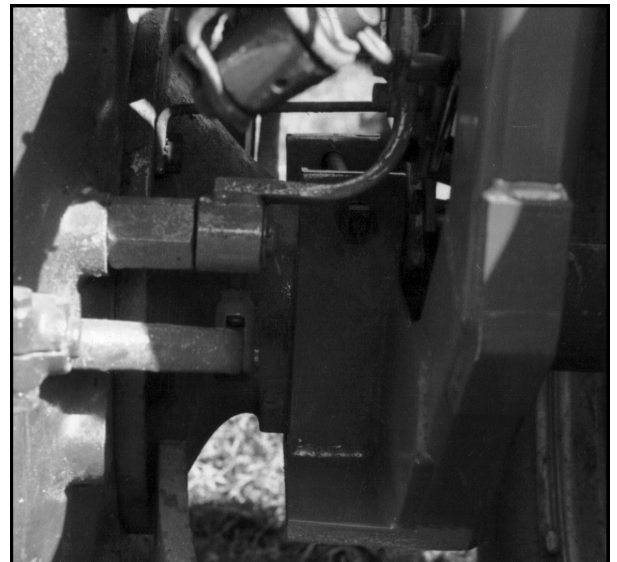
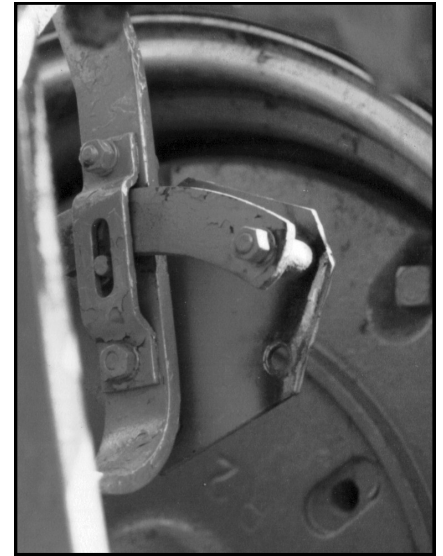




# SHERWOOD

MACHINERY PTY. LTD. A.B.N. 14 003 931 557  
FERNDAL RD., (P.O. BOX 6)  
BUNDANOON N.S.W. 2578

## SS 64 PAGE 3 FITTING INSTRUCTIONS





# SHERWOOD

MACHINERY PTY. LTD. A.B.N. 14 003 931 557

FERNDAL RD., (P.O. BOX 6)

BUNDANOON N.S.W. 2578


## SS 64 PAGE 4 FITTING INSTRUCTIONS

SS 64 BOLT KIT FOR INTERNATIONAL TRACTORS		
QUANTITY	DIMENSION	LENGTH ETC.
2 X	5/8" X	9" UNC GRADE 8 BOLTS
2 X	5/8" X	2 1/2" UNC GRADE 8 BOLTS
4 X	3/4" X	3" UNC GRADE 8 BOLTS
NOTE: NON-LINKAGE TRACTORS USE 3/4" X 2" BOLTS INSTEAD OF 3" ↑		
2 X	3/4" X	2" UNC GRADE 8 BOLTS
2 X	3/4" X	UNC GRADE 8 NUTS
8 X	3/8" X	2" UNC BOLTS
8 X	3/8" X	NYLOC NUTS
6 X	3/4" X	SPRING WASHERS
2 X	5/8" X	UNC GRADE 8 NUTS
4 X	5/8" X	SPRING WASHERS
4 X	5/8" X	FLAT WASHERS
8 X	SHORT	PIPE SPACERS (FOR MUDGUARDS)
2 X	2-HOLED	3 PT LINK SUPPORT PLATES
NOTE: ABOVE PLATES AND RELATED BOLTS ARE NOT REQUIRED IF THE TRACTOR DOES NOT HAVE 3 PT LINKAGE FITTED.		

**THIS ROLL-OVER TRACTOR SAFETY FRAME HAS BEEN DESIGNED AND TESTED TO AS 1636-1984 AND IS TO BE USED ONLY AS A ROLL-OVER PROTECTIVE STRUCTURE AND NOT FOR ANY OTHER PURPOSE. IT SHALL NOT BE ALTERED OR MODIFIED IN ANY WAY AS THESE MODIFICATIONS, ALTERATIONS OR DAMAGE MAY ADVERSELY AFFECT ITS PERFORMANCE.**

## **SS 64 FITTING INSTRUCTIONS FOR INTERNATIONAL MODELS AW6, AWD6, AW7, AWD7, AOS6, A554 & 564.**

**NOTE: FOR ALL 3 POINT LINKAGE MODELS - INSTALLER MUST INCLUDE ALL STEPS MARKED WITH \*.**

1. REMOVE MUDGUARDS AND ELECTRICAL WIRING IF APPLICABLE.
- 2.\* DISCONNECT 3 POINT LINKAGE ARMS FROM HYDRAULIC LIFTING MECHANISM, AND LOOSEN DRAWBAR CONNECTIONS.
- 3.\* UNBOLT 3 POINT LINKAGE ARMS FROM UNDERNEATH THE AXLES, REMOVING POWER STEERING BRACKETS ON LEFT HAND SIDE AT THE SAME TIME.
- 4.\* CUT OFF, USING OXY-ACETYLENE OR ANGLE GRINDER, THE LUGS ON THE 3 POINT LINKAGE WHICH PROTRUDE UPWARDS TOWARDS THE AXLES. ALSO SHORTEN DRAWBAR CONNECTION PIECE BY CUTTING APPROXIMATELY 1 1/2" OFF THE TOP, IE TO JUST BELOW THE LEVEL OF THE UPPER HOLE.
- 5.\* FIT TWO EXTENSION PIECES TO DRAWBAR CONNECTIONS USING 2 X 2" X 3" UNC BOLTS AND NUTS (1 PER SIDE), LARGE HOLE UPPERMOST AND GRIPPING LUGS FACING WHEELS. REFIT ORIGINAL SPACER INTO LARGE HOLE.  

6. POWER TAKE-OFF LEVER CONNECTION PLATE, IE THE PART ATTACHED TO THE MUDGUARD, NEEDS TO BE TRIMMED FROM THE BACK EDGE BY APPROXIMATELY 1". CUT BACK CLOSE TO FIRST HOLE FROM REAR OF TRACTOR. (SEE PHOTO, TOP RIGHT ON PAGE 3). THIS ALLOWS CLEARANCE FROM FRAME WHEN FITTED INTO POSITION.
7. LIFT FRAME INTO POSITION UNDER AND AROUND AXLES. PLACING 2 X 9" X 5/8"

CONTINUED OVER



UNC BOLTS (OR STUD BOLTS AS SUPPLIED), (1 PER SIDE), ACROSS THE TOP OF THE AXLE THROUGH THE TWO HOLES (1 IN EACH UPRIGHT PLATE), AND HOLD IN PLACE WITH NUTS PROVIDED. DO NOT TIGHTEN AT THIS STAGE. THIS PROCEDURE HOLDS FRAME IN APPROXIMATE POSITION FOR THE FITTING OF OTHER BOLTS IN THE FOLLOWING STEPS.

**NOTE: IN THE PLACEMENT OF THE FRAME LEGS, THAT THE CUT OUT SECTION OF THE REAR VERTICAL PLATE SHOULD END UP ON EACH SIDE OF THE MUDGUARD MOUNTING BRACKET. (WHICH IS PART OF THE AXLE CASTING).**

8a. USING 2" X 3/4" UNC BOLTS, SECURE FRAME IN POSITION (SEE ALSO STEP 14).

OR

8b.\* USING ORIGINAL BOLTS (2" X 3/4" UNC), SECURE FIRMLY THE FRAME IN POSITION, IGNORING 3 POINT LINKAGE AT THIS STAGE. [ BY IGNORING 3 POINT LINKAGE HERE, THE FRAME CAN BE LOCATED IN ITS CORRECT POSITION AND THEN HELD IN POSITION WHILE 3 POINT LINKAGE IS RE-FITTED, IN STEPS 11 TO 14].

9. PLACE TOP OF FRAME IN POSITION OVER THE TWO UPRIGHT LEGS, CENTRALISE AND TIGHTEN DOWN, ENSURING THAT THE LEGS ARE PROPERLY VERTICAL.

10. TIGHTEN SECURELY THE TWO 9" BOLTS (1 PER SIDE) ACROSS THE TOP OF EACH AXLE.

11.\* REMOVE ORIGINAL LINKAGE BOLTS FROM RIGHT HAND SIDE OF TRACTOR ONLY. (IE BOLTS ON THE UNDERSIDE OF THE FRAME.)

12.\* PLACING 2 1/2" X 5/8" UNC BOLT AND SPRING WASHER THROUGH DRAWBAR EXTENSION CONNECTOR (STEP 5), INTO DIFFERENTIAL HOUSING AND USING TWO 3" X 3/4" UNC BOLTS WITH SPRING WASHERS, RE-SECURE LINKAGE PLATE AND ARM TO UNDERSIDE OF FRAME. TIGHTEN ALL THREE BOLTS.

13.\* REPEAT STEPS 11 AND 12 FOR LEFT HAND SIDE OF TRACTOR, NOTING RE-FITTING OF POWER STEERING ARM IN STEP 14.

14. USE FORWARD-MOST HOLE TO RE-POSITION THE POWER STEERING ARM. THEN RE-CONNECT POWER STEERING ARM TO GEAR BOX HOUSING. TIGHTEN ALL BOLTS.

15.\* USING ORIGINAL PINS, RE-CONNECT LINKAGE ARMS TO LINKAGE HYDRAULIC LIFTERS ON BOTH SIDES.

16. USING 8 SPACERS (PIPE PIECES) PROVIDED, 3 ON LEFT SIDE AND 5 ON RIGHT SIDE (WHICH INCLUDES TWO ATTACHED TO POWER TAKE-OFF ENGAGING LEVER). REFIT MUDGUARDS.

17. DRILL NEW HOLES, 3/8", INTO REAR FOOT-PLATE SUPPORTS, 1 SPACER WIDTH FROM ORIGINAL POSITION, AND BOLT TOGETHER.

18. RE-CONNECT DRAWBAR MOUNTING BOLTS (1 PER SIDE), AND RE-TIGHTEN ALL DRAWBAR CONNECTIONS.

19. RE-CONNECT ELECTRICAL WIRING IF APPLICABLE.