



# SHERWOOD

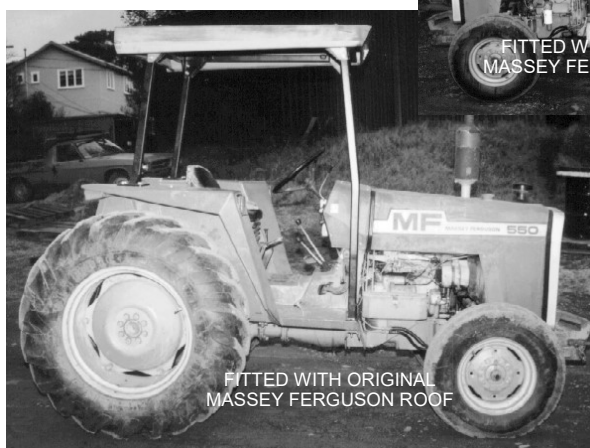
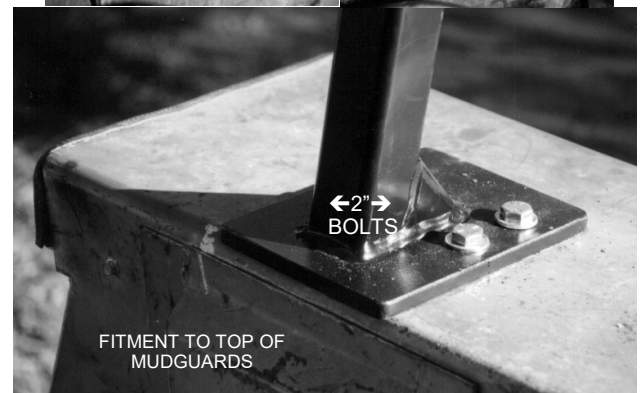
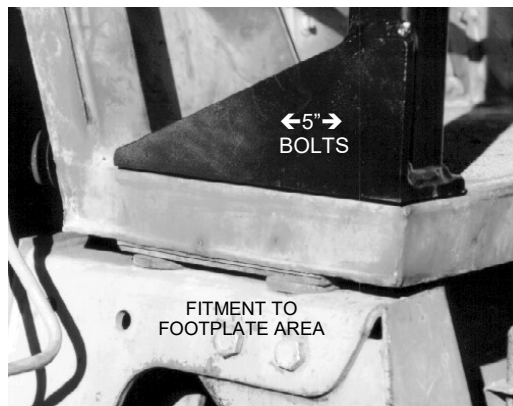
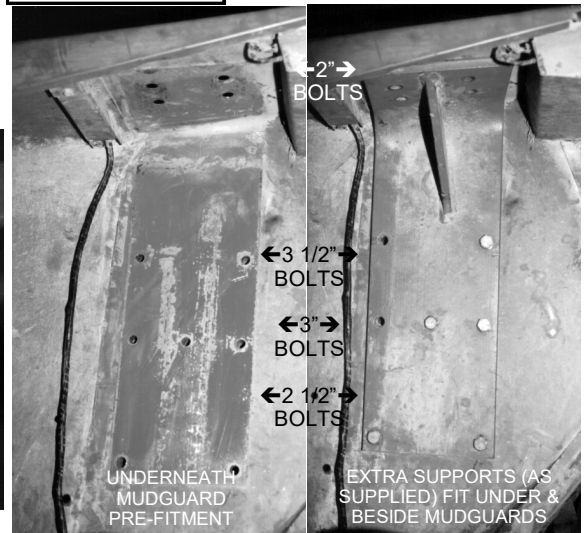
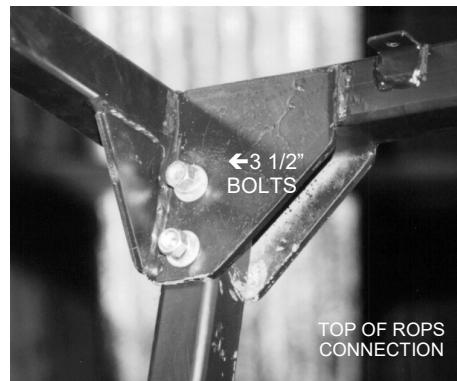
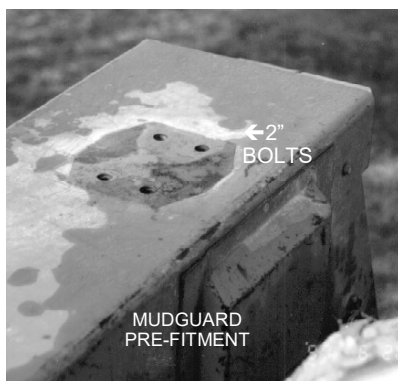
MACHINERY PTY. LTD. A.B.N. 14 003 931 557  
FERNDAL RD., (P.O. BOX 6)  
BUNDANOON N.S.W. 2578

## SS241 FITTING INSTRUCTIONS

THIS ROLL-OVER TRACTOR SAFETY FRAME HAS BEEN DESIGNED AND TESTED TO AS 1636-1996 AND IS TO BE USED ONLY AS A ROLL-OVER PROTECTIVE STRUCTURE AND NOT FOR ANY OTHER PURPOSE. IT SHALL NOT BE ALTERED OR MODIFIED IN ANY WAY AS THESE MODIFICATIONS, ALTERATIONS OR DAMAGE MAY ADVERSELY AFFECT ITS PERFORMANCE.

THIS UPDATED SHEET RELEASED FEB 1998

SS 241 BOLT KIT FOR MASSEY FERGUSON PLATFORM TRACTORS MF550, MF575 & MF590		
QUANTITY	DIMENSION	LENGTH ETC.
4	1/2" X	5" GRADE 5 NUTS & BOLTS
8	1/2" X	2" GRADE 8 NUTS & BOLTS
6	1/2" X	3" GRADE 8 NUTS & BOLTS
12	1/2" X	3 1/2" GRADE 8 NUTS & BOLTS
4	1/2" X	2 1/2" GRADE 8 NUTS & BOLTS
50	1/2"	FLAT WASHERS
20	1/2"	SPRING WASHERS



### BOLT PLACEMENT

ROOF	8 X 3 1/2"
FRONT BASE	4 X 5"
REAR M/GRD	8 X 2"
M/G SUPPORT, TOP	4 X 3 1/2"
" " MIDDLE	6 X 3"
" " BOTTOM	4 X 2 1/2"