



SHERWOOD

MACHINERY PTY. LTD. A.B.N. 14 003 931 557

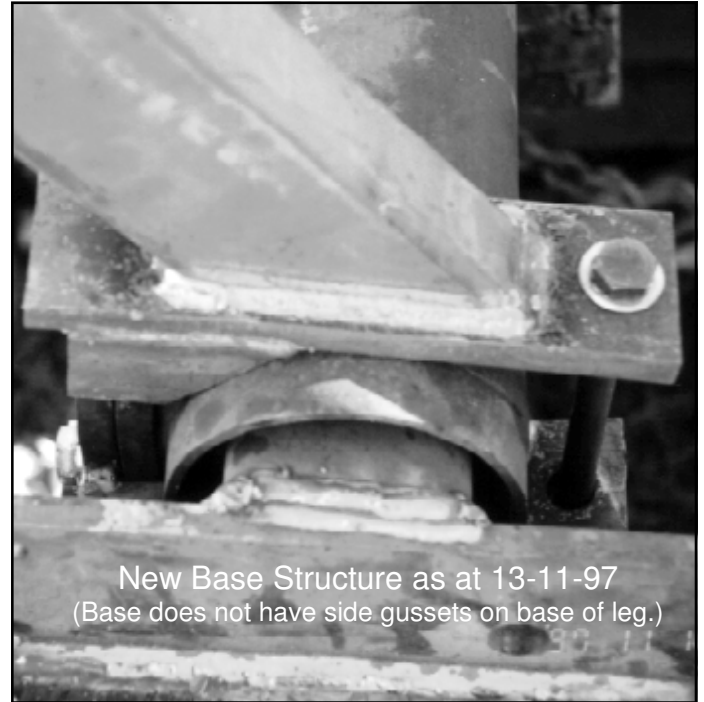
FERNDALE RD., (P.O. BOX 6)

BUNDANOON N.S.W. 2578

SS 249 FITTING INSTRUCTIONS

SS 249 BOLT KIT FOR FIAT TRACTOR RANGE

QUANTITY	DIMENSION	LENGTH ETC.
2 X	5/8" X	9" UNC GRADE 8 BOLTS
2 X	5/8" X	UNC GRADE 8 NUTS
6 X	5/8" X	SPRING WASHERS
8 X	5/8" X	FLAT WASHERS
4 X	M16 X	65mm 1.5 PITCH GR8.8 BOLTS



New Base Structure as at 13-11-97
(Base does not have side gussets on base of leg.)

THIS ROLL-OVER TRACTOR SAFETY FRAME HAS BEEN DESIGNED AND TESTED TO AS 1636-1984 AND IS TO BE USED ONLY AS A ROLL-OVER PROTECTIVE STRUCTURE AND NOT FOR ANY OTHER PURPOSE. IT SHALL NOT BE ALTERED OR MODIFIED IN ANY WAY AS THESE MODIFICATIONS, ALTERATIONS OR DAMAGE MAY ADVERSELY AFFECT ITS PERFORMANCE.

